

Parish Rebuilder

ST. LUKE'S LUTHERAN CHURCH - 5150 WILSON ST. LA MESA, CA 91942

619-463-6633 www.st-lukes-la-mesa.org

February 2018

Monthly Newsletter

Volume 18 Issue 2

We invite you to join

St. Luke's Lutheran Church

Please contact Amy in the office to discuss membership or to arrange an appointment with the pastor:

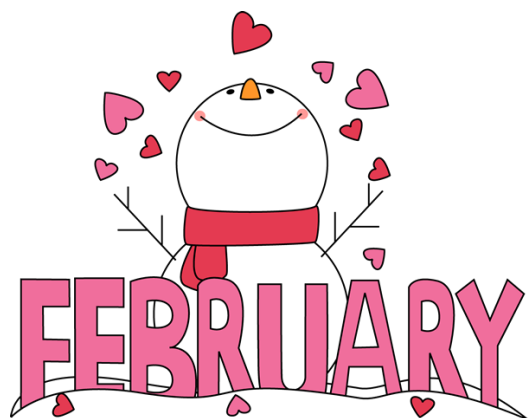
619-463-6633 or office-sllc@att.net

Office hours are:

Monday - Friday, 8:00 a.m. - 5:00 p.m.

Table of Contents

Pastor Mark	page 1
WSL	page 3
St. Luke's Stewards	page 5
Birthdays/Worship Text	page 7
Prayer Calendar	page 8
Worship Teams	page 9
Calendar	page 10



What now?

What to do when things seem like they are falling apart? In our human world of human sin, we encounter no shortage of difficulties. In times of overwhelming adversity, we often recall the verse, "No temptation has overtaken you that is not common to man. God is faithful, and he will not let you be tempted beyond your ability, but with the temptation he will also provide the way of escape, that you may be able to endure it" (I Corinthians 10:13 - ESV).

This is a complicated verse when applied to the complications of life. We often do not think of adversity as temptation. The Greek verb *peirazo* means "to test," "to be put to the test," or "to tempt." So, this is not so much being tempted to do something contrary to God's will but to be confronted with situations which test our faith. Sometimes those tests are mundane, and other times they seem to call our whole understanding of life into question. We Christians know, however, that as the verse says, we are not subject to anything that other human beings are not. We face illness, family difficulties, financial trials, and eventually death, for our loved ones and for ourselves.

Congregations also find themselves put to the test. Many face dwindling membership, financial difficulties, a loss of purpose and mission, internal strife, and at times death. Like individuals, these are trials to which other organizations are also subject. Nowadays in society, there is no shortage of organizations, particularly volunteer, which are confronted and confounded by these dynamics.

The disjointed nature of so many families provides barren ground compared to a life raised in a supportive, caring environment. These experiences leave many disillusioned about being able to find such in

larger groupings of people, under the adage “once bitten, twice shy.” On the other hand, if one plucks up the courage to join, say, a church, the sense of loss of control in smaller groupings can then be played out in larger groupings which can lead to tensions and discord which only seem to reinforce negative experiences already gathered earlier, elsewhere in life.

In these situations, for Christians though, this verse offers great promise. In the faith and in congregations of faith, there is the promise that “God is faithful.” This is not just an illusionary statement but the reality of a God who has come to us in human form, who experienced our trials, and who died on a cross. God proved his faithfulness to Jesus and to sinful humanity in Christ’s resurrection. Even though Jesus cried out, “My God, my God, why have you forsaken me,” God raised him from the dead. That faithfulness and that resurrection were the way not of escape but of deep identification and love for each and every human being lost in the battles of sin and death.

When we are baptized, God seals our lives in the life, death, and resurrection of Jesus Christ. God assures us by his life-giving promise that nothing in all creation can separate us from the love of God in Jesus Christ. We are thereby not shielded from life’s adversity. We are not thereby not afflicted by sinful, human reality. We are promised that everything transient in life has nothing to offer in comparison to God’s gracious will for our salvation.

That assurance comes to us only in God’s word, the word made flesh and the word of God in scripture. This word as God’s gift is the very presence of God’s healing, forgiving, life-giving love in our broken humanity. As part of the body of Christ, we are called in baptism with the help of Christian education to speak that word to each other, especially when presented with all those experiences which seem completely devoid of God. In creation, God said, “Let there be light,” and in the resurrection, God said, “Let there be love.” The light of that love is the word of God, and the darkness of our world of human sin shall never overcome it (John 1:5).

Pastor Mark

Thank you

To My St. Luke's Family,

It was a surprise the other day to receive the beautiful flowers for my birthday. I wish to thank you all for them.

Sincerely,

Ellis Petersen



In need of a Make-up Artist for that upcoming special event?

Contact Tania Salas at 619-301-2560

Bridal & Special Event Makeup
using Professional Airbrush Technology

Each month our newsletter is published for free due to the advertisements of local businesses..
Please take a moment each month and see if the services they provide could help you

Women of St. Luke's

The New Year is well underway. WSL will be serving the first Lenten Soup Supper on February 14

An old favorite returns; the craft show on February 22-24, Thursday 4pm-7pm, Friday 9am-6pm and Saturday 9am-4pm. WSL will selling tickets for the opportunity baskets and quilt made by Mary Ann Boullain. In addition to the craft show, a "craft supplies sale" will be held in the lower level during the same time

WSL board is already hard at work. We have some new members and some members that have served have taken a break (I was going to say old members, but that may be grounds for impeachment).

Our board for 2017 is:

Officers

Nancy Kearns — President
 Mary Ann Boullain — Vice-president
 JoAnn Hendrickson — Secretary
 Angie Hauk — Treasurer

Committee Chairwomen

Estella Schweikert — Mission Growth
 Shirley Carrington — Project Day
 Martha Applegate — Mission Outreach

Members at Large

Liz Dunnigan
 Marilyn Burns
 Marge Hersom

Circle Leaders

Betty Weidmer — Rebekah Circle
 Marge Hersom — Deborah Circle

Finally, we are happy to announce that the new WSL Constitution and Bylaws have been completed and approved by the board. A member of the board will be distributing the new documents and a ballot to WSL members before or after the service on Sundays. We hope you will read them and return your ballot by the due date. Those ballots not returned by the due date will automatically be assigned to the board for a proxy vote.

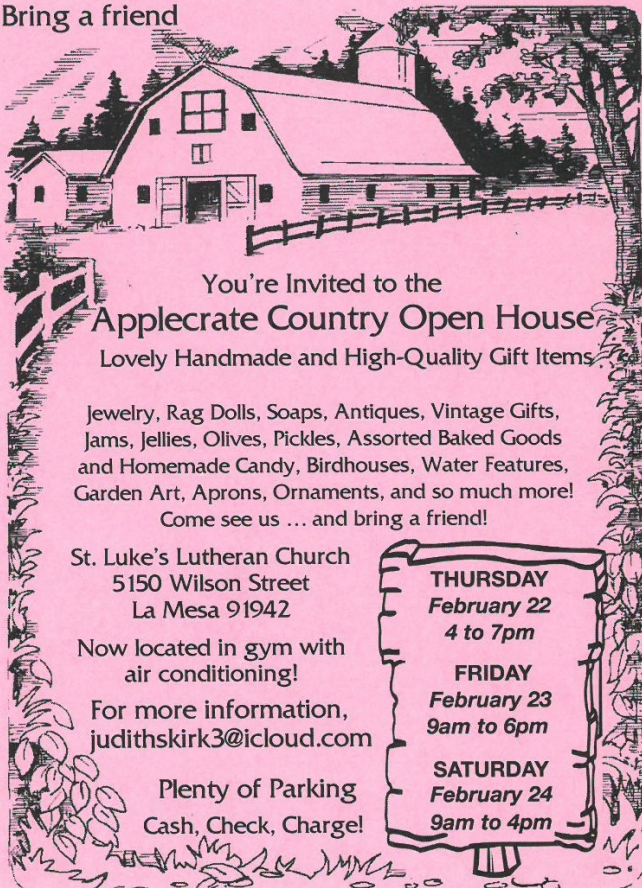
Blessings and love,

Nancy Kearns

WSL President



Bring a friend



You're Invited to the
Applecrate Country Open House
Lovely Handmade and High-Quality Gift Items

Jewelry, Rag Dolls, Soaps, Antiques, Vintage Gifts,
Jams, Jellies, Olives, Pickles, Assorted Baked Goods
and Homemade Candy, Birdhouses, Water Features,
Garden Art, Aprons, Ornaments, and so much more!
Come see us ... and bring a friend!

St. Luke's Lutheran Church
5150 Wilson Street
La Mesa 91942

Now located in gym with
air conditioning!

For more information,
judithskirk3@icloud.com

Plenty of Parking
Cash, Check, Charge!

THURSDAY
February 22
4 to 7pm

FRIDAY
February 23
9am to 6pm

SATURDAY
February 24
9am to 4pm

CRAFT SUPPLY SALE

February 22nd–24th

Lower Level

Thursday 4:00pm to 7:00pm

Friday 9:00am to 6:00pm

Saturday 9:00 am to 2:00pm



PLEASE REMEMBER
THE HEIFER INTERNATIONAL
QUARTER BANK IN THE NARTHEX!!

HAVE YOU FORGOTTEN IT IS THERE???



ST. LUKE'S STEWARDS

This is part of an ongoing look at some of this congregation's STEWARDS. You will read about their professions and perhaps learn a little of where they came from and how they came to be at St. Luke's.

Probably most St. Luke's members have met our very personable new Council Secretary, TANIA SALAS. Tania and her husband of five years, Mario, are often sitting "down front" operating the projector during worship services, accompanied by their little three-year-old daughter, Giuliana.

The Salas family, members at St. Luke's for three years, initially attended St. Luke's Sunday services at the express invitation of our president, Judi Dunnigan-Cole. Tania's and Judi's work with Sharp Rees Stealy Medical Group is what originally led to their knowing each other.

Tania has been working at Sharp Health Care for nearly seventeen years. She received her Bachelor in Health Care Administration Degree from the University of Phoenix five years ago. Tania and Judi have had a ten-year working relationship at Sharp.

However, for the past eight months, Tania has happily been the Project Coordinator for Sharp Community Medical Group where she is working for SharpCare, a product of Sharp Community Medical Group, transitioning independent private practices into becoming part of SharpCare. She works at the Kearny Mesa corporate office.

Since the Salas family lives in Chula Vista, this means Tania usually has a time-consuming drive each day. But she loves what she is doing and feels blessed to have been at the right place at the right time. Her work with the various physicians associated with Sharp has been very rewarding. Congratulations, Tania, on becoming part of the St. Luke's Council.



Tania, Mario and Giuliana at
Giuliana's baptism in 2015

Book Club

Due to illnesses and the holidays, the book club has had to shuffle the books around. In January, we read *Dewey: The Small-Town Library Cat Who Touched the World* and celebrated Amy Hoffman's birthday during our discussion time. Our selections have changed up a bit for the next 2 months:

February :

The Passion of Artemisia by Susan Vreeland

March:

The Nest by Cynthia D'Aprix Sweeney

Join us on the last Wednesday of the month at noon in the library for a potluck lunch and discussion.



St. Luke's Schedule

1st, 3rd and 5th Sundays—Traditional Service

2nd and 4th Sundays—Contemporary Service

Communion is given every Sunday

Sunday School—every Sunday after worship

Children's Choir, practice at 10:30am Sundays

Children's Choir Performance

2nd Sunday of Month

Lenten Service Schedule

Ash Wednesday Soup Supper

5:30pm

Ash Wednesday

February 14, 2018

7:00pm

Lenten Worship Schedule

February 21—March 21

7:00pm



Marge Henkel—February 1

Rick Parkhurst—February 1

Michelle Dipierro—February 3

Carol Bohnsack—February 7

Audrey Utley—February 8

Bev Carson—February 8

Richard Utley—February 8

Stephanie Brown—February 9

Andy Killion—February 20

Etsuko Busker—February 26



FEBRUARY WORSHIP TEXT

4th — Fifth Sunday after Epiphany

First Lesson—Isaiah 40: 21-31

Second Lesson—1 Corinthians 9: 16-23

Gospel—Mark 1: 29-39

11th — Transfiguration of Our Lord

First Lesson—2 Kings 2: 1-12

Second Lesson—2 Corinthians 4:3-6

Gospel Lesson—Mark 9: 2-9

14th — Ash Wednesday

First Lesson—Isaiah 58: 1-12

Second Lesson—2 Corinthians 5:20b-6:10

Gospel—Matthew 6:1-6, 16-21

18th — First Sunday in Lent

First Lesson—Genesis 9: 8-17

Second Lesson—1 Peter 3: 18-22

Gospel—Mark 1: 9-15

25th — Second Sunday in Lent

First Lesson—Genesis 17: 1-7, 15-16

Second Lesson—1 Peter 3: 18-22

Gospel—Mark 8: 31-38

February Prayer Calendar

“Gracious Spirit”

1	Genesis 1: 1-2	
2	Psalms 139: 1-10	
3	Matthew 1: 18-23	<i>Come, gracious Spirit, heavenly dove,</i>
4	John 1: 29-34	<i>With light and comfort from above</i>
5	Matthew 12: 18-21	<i>Come, be our guardian and our guide;</i>
6	John 2: 31-35	<i>Over every step preside.</i>
7	Luke 11: 9-13	
8	John 14: 15-18	<i>The light of truth to us display</i>
9	John 14: 22-26	<i>And make us know and choose your way;</i>
10	John 15: 26-27	<i>Plant holy fear in every heart,</i>
11	John 16: 4-15	<i>That we from God never depart.</i>
12	John 20: 19-23	
13	Acts 1: 4-9	<i>Lead us to Christ, the living way,</i>
14	Acts 2: 1-4	<i>Nor let us from his pastures stray;</i>
15	Acts 2: 29-33	<i>Lead us to holiness the road</i>
16	Acts 3: 36-39	<i>That we must take to dwell with God.</i>
17	Acts 10: 34-48	
18	Romans 5: 1-5	<i>Lead us to heaven, that we may share</i>
19	1 Corinthians 2: 9-13	<i>Fullness of joy forever there;</i>
20	Galatians 3: 10-14	<i>Lead us to our eternal rest,</i>
21	2 Corinthians 1: 18-22	<i>To be with God forever blest.</i>
22	Ephesians 1: 11-14	
23	2 Corinthians 3: 12-18	
24	Galatians 5: 22-25	<i>Lutheran Book of Worship</i>
25	Romans 8: 1-4	<i>Hymn #475 vss. 1, 2, 3, 4</i>
26	Romans 8: 9-17	
27	Romans 8: 24-29	
28	Romans 15: 8-13	

FEBRUARY WORSHIP TEAMS

	Reader Altar Guild Sound Technician	<i>Whitney Utley Terry East Matt Kirk</i>
4th	Communion Assistant — Bread	<i>Ted Olsen</i>
	Prayers of the People	<i>Pastor Menacher</i>
	Projectionist	<i>Tania Salas</i>
	Communion Assistants — Wine	<i>Liz Dunnigan and Thelma Pace</i>
	Greeters	<i>Ellis Petersen and Loraine Wininger</i>
	Usher Team	<i>Chuck Hersom</i>
	Acolytes	<i>Stuart Olsen and Paige Yerger</i>
11th	Communion Assistant — Bread	<i>Judi Dunnigan-Cole</i>
	Prayers of the People	<i>Karen Skullerud</i>
	Projectionist	<i>John Busker</i>
	Communion Assistants — Wine	<i>Darcy Barghols and Marge Hersom</i>
	Greeters	<i>JoAnn Hendrickson</i>
	Usher Team	<i>Randy Engel</i>
	Acolytes	<i>Brooke and Madison Klomp</i>
14th Ash Wednesday	Worship Assistants	<i>Judi Dunnigan-Cole and Ted Olsen</i>
	Usher	<i>George Hauk</i>
18th	Communion Assistant — Bread	<i>Ted Olsen</i>
	Prayers of the People	<i>Martha Applegate</i>
	Projectionist	<i>Gail Knippelmeyer</i>
	Communion Assistants — Wine	<i>Liz Dunnigan and Thelma Pace</i>
	Greeters	<i>Marilyn Burns and Marie Handley</i>
	Usher Team	<i>Chuck Hersom</i>
	Acolytes	<i>Stuart Olsen and Paige Yerger</i>
25th	Communion Assistant — Bread	<i>Judi Dunnigan-Cole</i>
	Prayers of the People	<i>Mary Ann Boullain</i>
	Projectionist	<i>Gail Knippelmeyer</i>
	Communion Assistant — Wine	<i>Darcy Barghols and Marge Hersom</i>
	Usher Team	<i>Chuck Hersom</i>
	Acolytes	<i>Brooke and Madison Klomp</i>

FEBRUARY 2018

Sun	Mon	Tue	Wed	Thu	Fri	Sat
				1 8:00 am Tai Chi 7:00pm Choir 7:00 pm SLTA	2	3 9-10 am Altar Guild
4 9:00 am Worship 10: 30 am Sunday School 10:30 Children's Choir practice	5 9:00 am Counters	6 8:00 am Tai Chi 9:00 am WSL	7 11:00 am Staff	8 8:00 am Tai Chi 7:00pm Choir 7:00 pm SLTA	9	10 9-10 am Altar Guild
11 9:00 am Worship 10: 30 am Sunday School 10:30 Children's Choir practice	12 1:30 pm Counters	13 8:00 am Tai Chi 12:30 pm Rebekah Circle 9:30am Project Day	14 ASH WEDNESDAY 11:00 am Staff 5:30pm Soup Supper 7:00pm Ash Wednesday service	15 8:00 am Tai Chi 10:00 am Deborah Circle 7:00 pm Choir 7:00 pm SLTA	16	17 9-10 am Altar Guild
18 9:00 am Worship 10: 30 am Sunday School 10:30 Children's Choir practice	19 Office/campus closed	20 8:00 am Tai Chi 9:00 am Counters	21 11:00 am Staff Noon Book Club 7:00pm Lenten Service	22 8:00 am Tai Chi 4:00pm- 7:00pm Craft Fair 7:00 pm SLTA	23 9:00am-6:00pm Craft Fair	24 9-10 am Altar Guild 9:00am-4:00pm Craft Fair
25 9:00 am Worship 10: 30 am Sunday School 10:30 Children's Choir practice	26 1:30 pm Counters	27 8:00 am Tai Chi 9:30 am Project Day				

ST. LUKE'S LUTHERAN CHURCH

5150 WILSON ST.

LA MESA, CA 91942

Phone: 619-463-6633

Webpage: www.st-lukes-la-mesa.org

Email: office-sllc@att.net

NON-PROFIT
ORGANIZATION
U.S. POSTAGE
PAID
EL CAJON, CA
PERMIT NO 262

Dated Material
FEBRUARY 2018

ADDRESS SERVICE REQUESTED

A WARM WELCOME TO ALL

- Worship Service: Sundays, 9:00 am in the Sanctuary.
- Sunday School for all ages: Sundays, at 10:30 am.
- St Luke's Theological Academy—Sundays 4:00pm & Thursdays 7:00 pm.
- Ash Wednesday Service—February 14 at 7:00pm.
- Lenten Services each Wednesday beginning February 14 at 7:00pm.
- Applecrate Craft Fair: February 22-24.

St. Luke's Mission Statement:

We are called as a community of Christians saved by grace
—through faith alone in Jesus Christ—
to spread the Holy Gospel in word, sacrament, and action
solī deo gloria.